

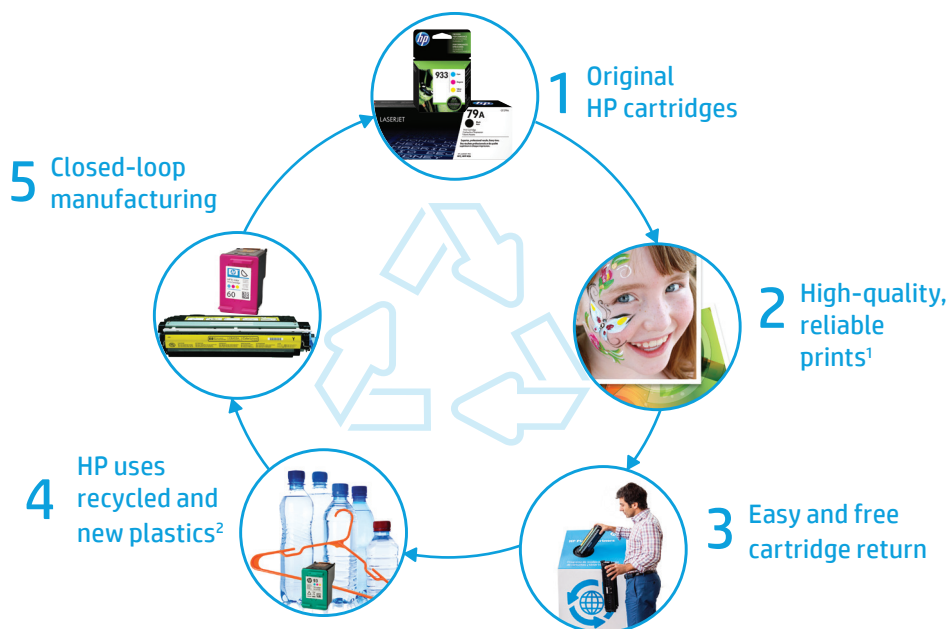


HP closed-loop recycling

Leading the way with a circular economy strategy

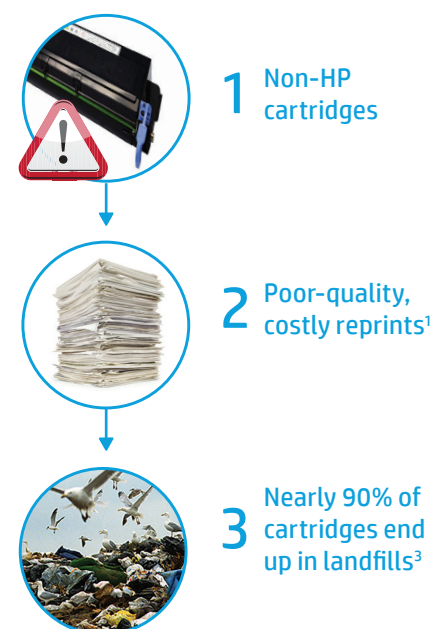
When you choose Original HP cartridges and recycle through HP Planet Partners, you're taking part in a closed loop—where materials are added and reused to make new products, and no cartridges end up in a landfill.

Circular economy



VS.

Linear economy



Redefining impact and changing lives

HP uses recycled plastic bottles collected in Haiti and from other sources in the manufacturing of Original HP ink cartridges. This effort helps to create sustainable jobs, brings opportunity to the people in Haiti, and helps prevent plastics from reaching the Caribbean Sea.

For more information on HP closed-loop recycling and our efforts in Haiti, see hp.com/go/Rosette.



Together, we're recycling for a better world

The results speak for themselves. Here's the difference HP made in 2018 by using recycled plastic in ink cartridges instead of new plastic:



60% reduction
in fossil fuel
consumption⁴
Conserved more than
705 barrels of oil⁵



39% less
water used⁴
Enough to supply
7.9 million Americans
for one day⁶



30% average
carbon footprint
reduction⁴
Like taking 533 cars off
the road for one year⁷

Bringing used products back to life

With your help, we're closing the loop. Because of customers like you, Original HP ink and toner cartridges are now made with recycled content from cartridges and other materials.²

80%



of **Original HP ink cartridges** contain
closed-loop recycled plastic²



101 million
recycled plastic hangers⁸

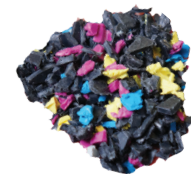


4.37 billion
recycled plastic bottles—that's
enough bottles to reach the moon
and back⁸

100%



of **Original HP toner cartridges**
contain recycled content²



830 million
ink and toner cartridges recycled
by customers through HP Planet
Partners⁸

HP diverts almost **1 million plastic bottles** from landfills every day to be used in new ink cartridges⁸

¹ 2019 SpencerLab Monochrome Reliability study, commissioned by HP, compared Original HP cartridges with seven brands of non-HP cartridges sold in North America for HP Pro M402 and Pro M521 printers, HP 26A and 55A cartridges. See spencerlab.com/reports/HPReliability-NA-2019.pdf.

² 80% of Original HP ink cartridges contain between 45-70% recycled content. 100% of Original HP toner cartridges contain between 5-45% post-consumer or post-industrial recycled content. Does not include toner bottles. See hp.com/go/recycledcontent for list.

³ 2018 InfoTrends North America Supplies Recycling study, commissioned by HP. Findings are based on average results of interviews with 7 remanufacturers, 2 NBC manufacturers, 3 empty collectors, and 3 distributors. See hp.com/go/NA-2018InfoTrends.

⁴ Feb 2018 RPET and RPP Four Elements Consulting Life Cycle Assessment (LCA), commissioned by HP. See hp.com/go/recycledplasticsLCA.

⁵ Assumes 1 MJ = 0.00016 barrel of oil equivalent.

⁶ Assumes consumption of 90 gallons of water a day per person. See water.usgs.gov/edu/ga-home-percapita.html.

⁷ Calculated with the EPA Greenhouse Gas Equivalencies Calculator. See epa.gov/energy/greenhouse-gas-equivalencies-calculator.

⁸ HP 2018 Sustainability Report. See hp.com/sustainableimpact.



© Copyright 2019 HP Development Company, L.P. The information contained herein is subject to change without notice. The only warranties for HP products and services are set forth in the express warranty statements accompanying such products and services. Nothing herein should be construed as constituting an additional warranty. HP shall not be liable for technical or editorial errors or omissions contained herein.

4AA6-9864ENUC, October 2019, Rev. 3

